

H-Beam SHORING

Product Description

The H-beam shoring systems from FORMIN are rigid metal structures made of steel, designed to provide immediate structural support. They are engineered to closely match the tunnel excavation line at the tunnel face.

The steel arches are composed of segments of variable length, bolted together to form a complete ring around the tunnel perimeter, following the design section specified in the client-approved engineering drawings.

Application

- ❖ Primarily used in mining, tunneling, and underground works.
- ❖ In mining, it is mostly applied in permanent operations, especially under conditions of extremely fractured and/or very weak rock.
- ❖ Its main advantage lies in the fact that this continuous support system remains effective even after significant ground deformation has occurred.

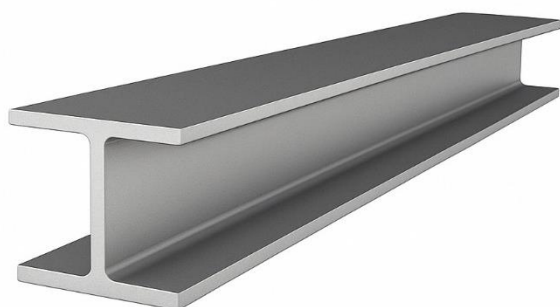
Components

- ❖ Base Plates
- ❖ Splice Plates
- ❖ Spacers
- ❖ Spacer Holders
- ❖ Bolts and Nuts

Technical Characteristics of the Beam

Material: WF flange H-profiles (American standard)

Standard / Grade	Carbon (C) %	Phosphorus (P) %	Sulfur (S) %	Silicon (Si) %	Yield Strength (MPa)	Tensile Strength (MPa)	Elongation (%)
ASTM A36	0.26	0.04	0.05	0.40	250	400	18



Viga de Acero Tipo H
Acero ASTM A36
Medidas: H6/25Lb Pie – H6/25Lb Pie –
H4/13Lb Pie.