



INDUSTRIA DE FORTIFICACIÓN MINERA

Expandable Rock Bolt AIRBOLT

Product Description

Our Airbolt expansion bolt is manufactured using hot-rolled steel compliant with the S355MC standard. This steel provides our bolt with significant mechanical properties, enabling it to perform exceptionally well against the intrinsic stresses of fractured rock masses.

The Airbolt consists of a steel tube sealed with two welded bushings on each end, one of which includes an injection port. The entire body is shaped in an omega profile. The system is completed with an A36 steel plate, ensuring proper load transfer to the ground. The coating can be zinc-plated by electrolysis in accordance with ASTM B633, reaching a thickness of up to 20 microns.

Key Benefitss

- ❖ Its zinc coating provides extended service life in environments with acidic water or other corrosive agents.
- ❖ Immediate load-bearing capacity along the entire length of the installed anchor.
- ❖ Shorter development cycles thanks to fast, safe, and simple installation.
- ❖ Adaptable to drill holes of various diameters.
- ❖ Compatible with high-pressure electric and pneumatic pumps.

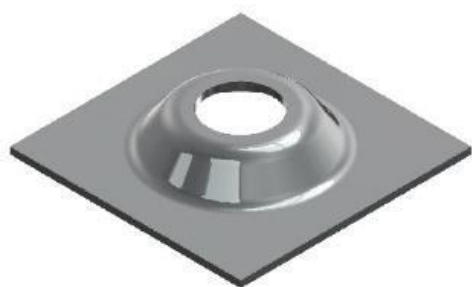


Chemical Composition and Mechanical Properties of the Bolt Body Steel

Standar Grade	Carbon (C) % Máx.	Manganese (Mn) % Máx.	Phosphorus (P) % Máx.	Sulfur (S) % Máx.	Silicon (Si) % Máx.	Minimum Yield Strength (MPa)	Tensile Strength (MPa)	Elongation %
EN 10149-2 S355MC	0.12	1.50	0.025	0.020	0.50	355	430 - 550	19 - 23

Technical Specifications – Black Steel and Zinc-Coated Version

Minimum Breaking Load (Ton)	Tube Thickness (mm)	Ø Inflation Tube (mm)	Ø Initial Tube (mm)	Ø Injection Bushing (mm)	Ø Recommended Borehole	Zinc Coating Standard	Coating Thickness (Microns)	Procedure
> 12Ton	2.1	41	28	30	36.0 – 38.0	ASTM B633	20	Electrolysis



Steel Plate

Our plate is used to anchor the bolt to the ground and to properly distribute the applied load. It is manufactured with a dome shape and made of ASTM A1011 steel.

Commercial Presentation

Our bolts are available in both zinc-coated and black steel versions, and in various lengths, typically ranging from 0.6 to 4.0 meters. They are shipped in properly labeled packages of 200 units, including production data and tailored to the client's specifications.